

TRUCS & ASTUCES – Configuration station travail SOLIDWORKS : les prérequis matériel et système à valider

Résumé

Pour concevoir de façon optimisée dans SOLIDWORKS, il est important de choisir une station de travail CAO et des logiciels adaptés à l'utilisation de SOLIDWORKS.

Déroulé

1. Configuration station travail SOLIDWORKS : les prérequis matériel

a) Prérequis SOLIDWORKS

Afin de choisir votre station travail SOLIDWORKS, vous pouvez vous aider des [prérequis matériel SOLIDWORKS](#).

SOLIDWORKS

Operating Systems	SOLIDWORKS 2015 (EDU) 2015-2016	SOLIDWORKS 2016 (EDU) 2016-2017	SOLIDWORKS 2017 (EDU) 2017-2018
Windows 10, 64-bit	✓ (2015 SP5)	✓	✓
Windows 8.1, 64-bit	✓	✓	✓
Windows 8.0, 64-bit	✓	✗	✗
Windows 7 SP1, 64-bit (only)	✓	✓	✓
Hardware			
RAM	8GB or more recommended		
Video Card	Certified cards and drivers		
Processor	Intel or AMD with SSE2 support. 64-bit operating system required		
Install Media	DVD Drive or Broadband Internet Connection		
Microsoft Products			
Internet Explorer	IE 9,10,11	IE 10,11	IE 11
Excel and Word	2010, 2013	2010, 2013, 2016 (2016 SP3)	2010, 2013, 2016
Other			
Anti-Virus	Supported Anti-Virus Products		
Network	Microsoft Windows networking. Novell networks and non-Windows network storage devices are not supported		
Virtual environments	Supported virtual environments		

SOLIDWORKS Network License Server

Operating Systems	SOLIDWORKS 2015	SOLIDWORKS 2016	SOLIDWORKS 2017
Windows 10, 64-bit	✓ (2015 SP5)	✓	✓
Windows 8.1, 64-bit	✓	✓	✓
Windows 8.0, 64-bit	✓	✗	✗
Windows 7 SP1, 64-bit (only)	✓	✓	✓
Windows Server 2012 R2	✓	✓	✓
Windows Server 2012	✓	✓	✓
Windows Server 2008 R2, SP1	✓	✓	✓

SOLIDWORKS Electrical Server

Operating Systems	2015	2016	2017
Windows Server 2012 R2	✗	✗	✓
Windows Server 2012	✓	✓	✓
Windows Server 2008 R2, SP1	✓	✓	✓
SQL Server Platform			
SQL 2016	✗	✗	✓
SQL 2014	✗	✓	✓
SQL 2012	✓	✓	✓
SQL 2008 R2	✓	✗	✗

b) 3 configurations exclusives de stations de travail CAO HP

A travers son site myCAD, Visiativ propose également des conseils pour configurer votre station de travail CAO de façon optimale afin d'utiliser confortablement toute la gamme de logiciels CAO SOLIDWORKS de façon confortable :

- [Le processeur des workstations cao](#)
- [La mémoire vive des workstations cao](#)
- [La carte graphique des workstations cao](#)
- [Le disque dur des workstations cao](#)
- [Quelles workstations cao pour quels usages ?](#)

2. Configuration station travail SOLIDWORKS : les prérequis système

Tout d'abord, vous pouvez valider les [prérequis pour les environnements virtuels certifiés](#) grâce à cette documentation SOLIDWORKS :

Support for Virtual Environments

Use this information to ensure you are always working with a SOLIDWORKS supported and optimized system for hardware, operating system and Microsoft products.

Virtualization Environment	SOLIDWORKS, eDrawings (Standalone)	SOLIDWORKS, eDrawings (SNL Clients)
VMware vSphere (ESXi) 5.1	Supported	Supported
VMware Workstation 9	Supported	Supported
Microsoft Hyper-V 2012	Supported	Supported
Parallels Desktop 10 for Mac	Supported	Supported
Citrix XenServer 6.2	Supported	Supported
nVidia GRID VCA	Not Supported (Blocked)	Supported

Virtualization Environment	SNL Server	Enterprise PDM Servers
VMware vSphere (ESXi) 5.1	Supported	Supported
VMware Workstation 9	Supported	Supported
Microsoft Hyper-V, 2012	Supported	Supported
Parallels Desktop 10 for Mac	Not Supported	Not Supported
Citrix XenServer 6.2	Supported	Supported
nVidia GRID VCA	N/A (SNL installed elsewhere)	Not Supported

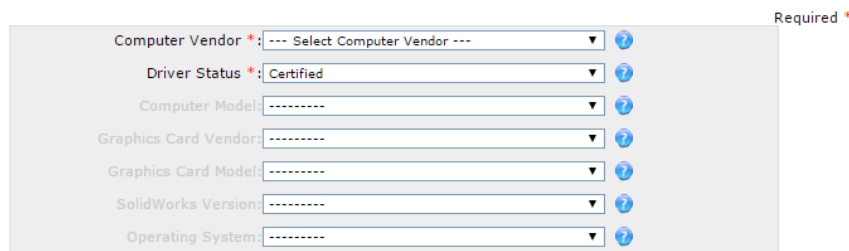
Ensuite, vous pouvez vous appuyer sur les [conseils SOLIDWORKS](#) pour le driver de carte graphique certifié.

Graphics Card Drivers

Find graphics card drivers for your system to ensure system performance and stability.

Display results using one of the two methods listed below:

- ➔ **List Certified Computer System/Graphic Card Combinations**
- If your graphics card shipped with your computer choose Driver Status Certified OR Tested and search by Computer Vendor.
- ➔ **Browse for Graphics Cards or Non-Listed Combinations**
- If your system combination is not listed, or you are just looking for graphics cards:
Select --- Certified or tested as driver Status AND Any System Vendor as the Computer Vendor and select a Graphics Card Vendor.



Note:

- What if my System / Software Configuration is **not listed**?
- Graphics card drivers with higher version numbers are the latest drivers.
- Read more about system requirements to ensure you are always working with a SOLIDWORKS supported and optimized system for hardware, operating system and Microsoft products.
- SOLIDWORKS graphics card drivers are certified with SOLIDWORKS specific profile settings or the default settings provided by the graphics card vendor. Using other settings can affect stability, performance and display quality.
- A Certified graphics card or system is tested to a higher standard and is supported by the vendor. SOLIDWORKS recommends the use of Certified graphics cards and systems. The list displays the driver version used to certify or test the card or systems.

Enfin, voici une [liste des anti-virus certifiés](#) pour l'installation de SOLIDWORKS.

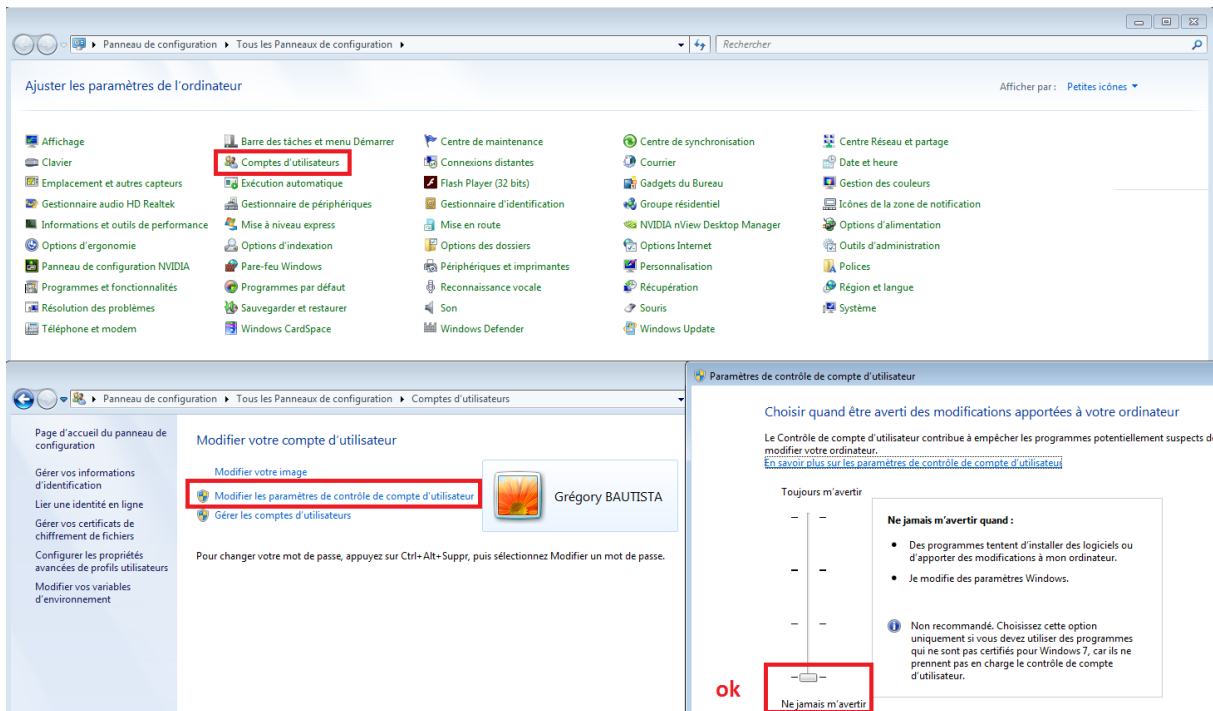
Supported Anti-Virus Products

If your application is not listed, we cannot verify whether your application will block the installation of SOLIDWORKS software or Windows components. You may need to turn anti-virus off during install **and** perform a system restart. **Note:** Always keep your anti-virus pattern file up-to-date. See the specific vendor for details.

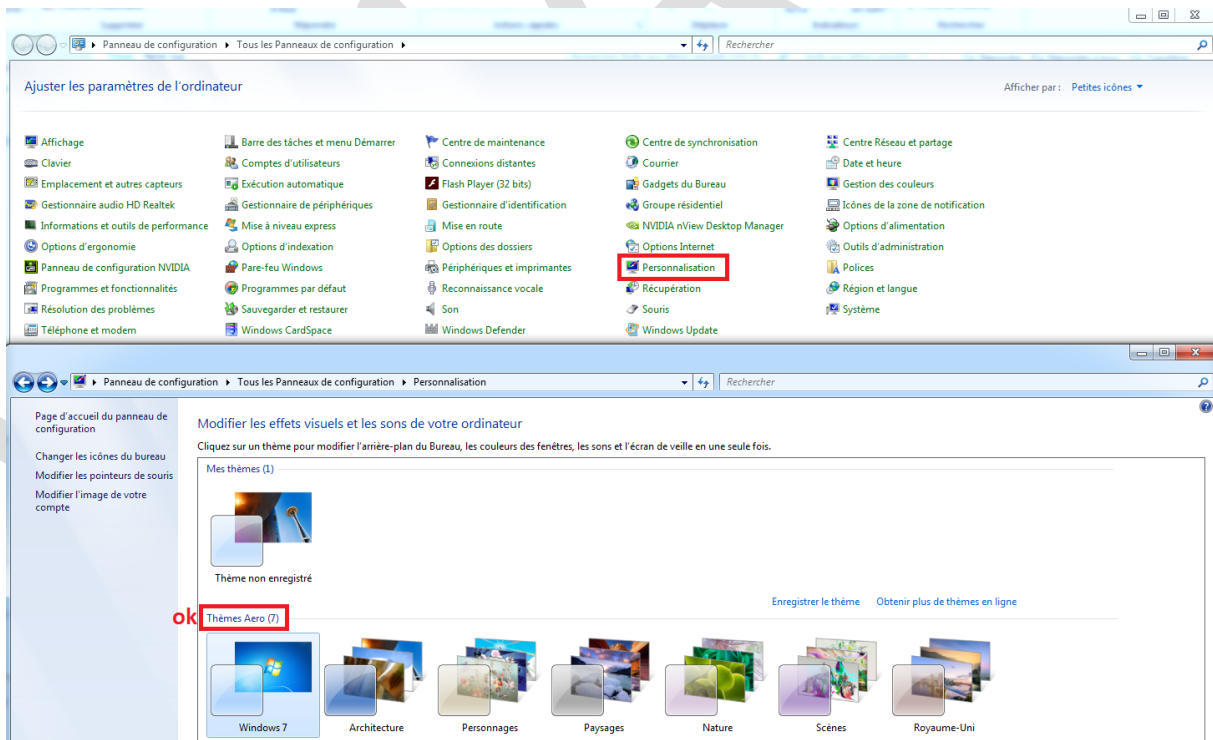
Application	Version	Notes
Avast! Professional Edition	12.3.2280	
AVG Anti-Virus	2015	
ESET NOD32	9	
Kaspersky AV	16.0.1.445	
McAfee VirusScan Enterprise	2015	
Microsoft Defender	1.229.1493.0	
Microsoft Security Essentials	4.10.14942.1000	
Norton AntiVirus	22.8.0.50	
Norton Norton 360	22.8.0.50	
Panda AntiVirus	2016	
Sophos Anti-Virus	10.6	
Symantec Endpoint Protection	12.1.6	
TrendMicro OfficeScan™	11.0	Install may fail to extract a random file, see Trend Micro KB article 1096841 http://esupport.trendmicro.com/solution/en-US/1096841.aspx

3. Configuration station travail SOLIDWORKS : préconisations pour le paramétrage système

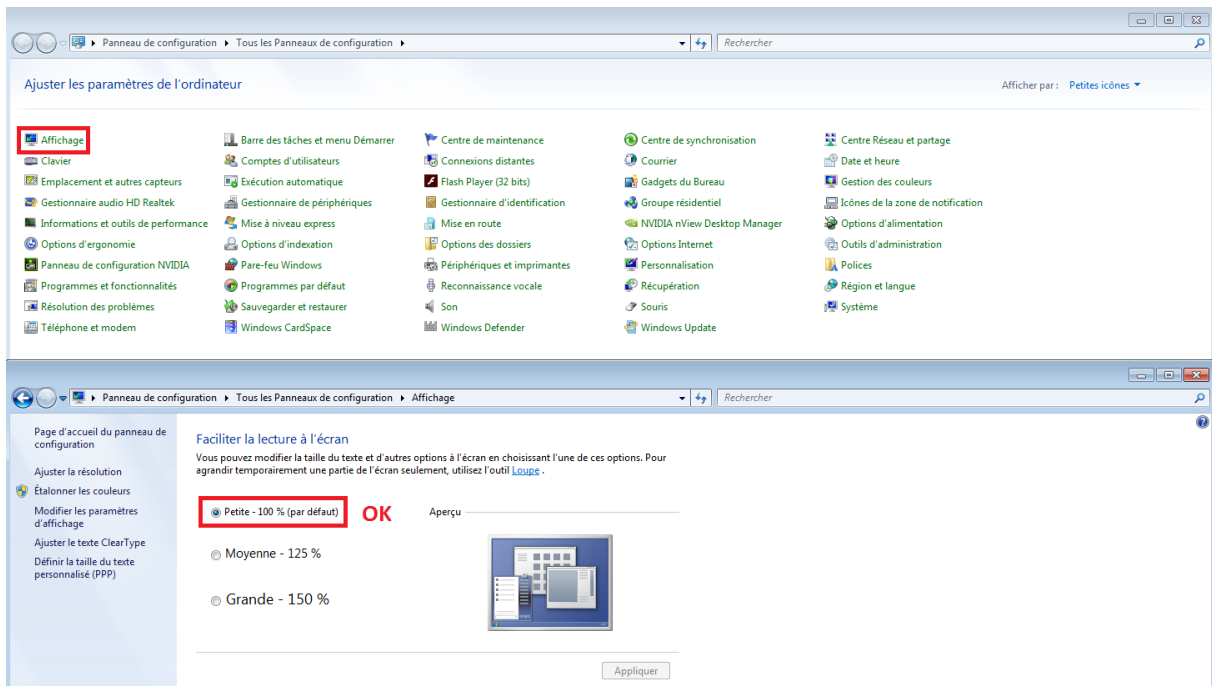
- Désactiver le contrôle de compte utilisateur : Panneau de configuration > Comptes d'utilisateurs > Modifier les paramètres de contrôle de compte utilisateur :



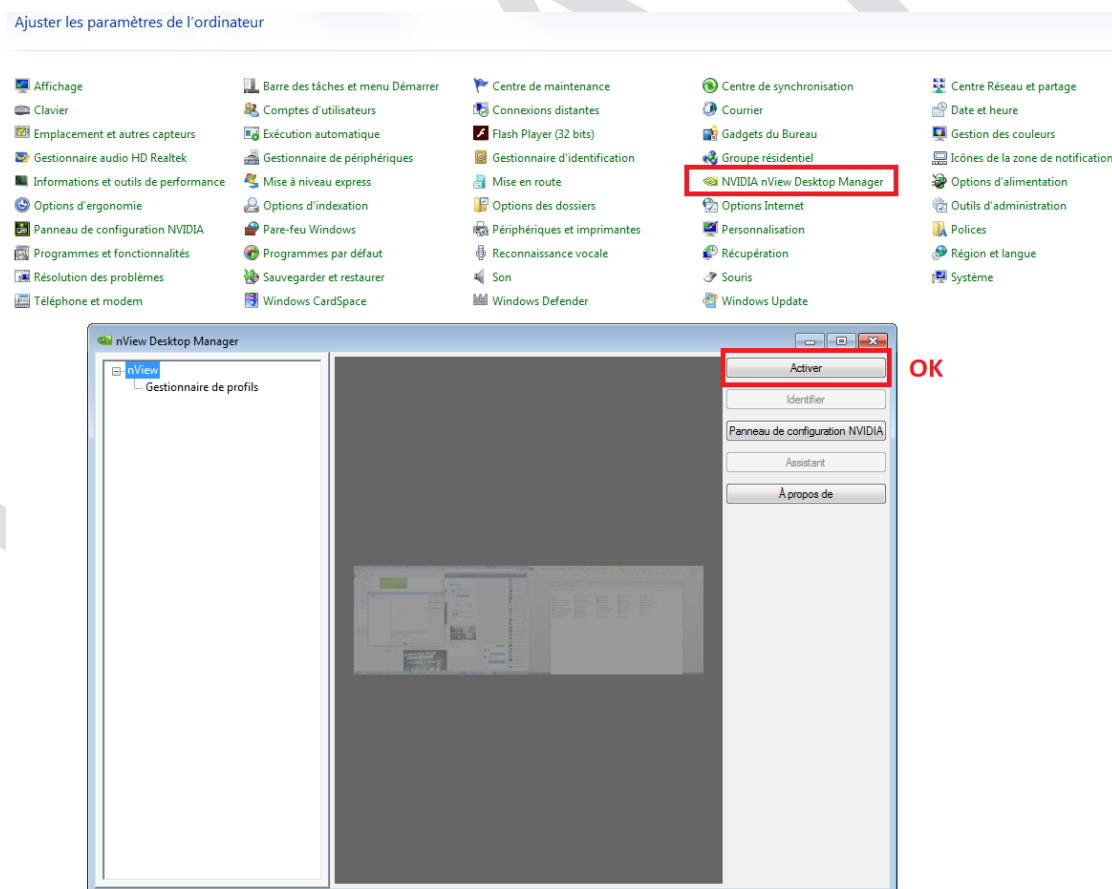
- Utiliser un thème Windows AERO : Panneau de configuration > Personnalisation



- Avoir un affichage en petit icône (100%) : Panneau de configuration > Affichage.



- Désactiver Nvidia Nview Desktop manager : Panneau de configuration > Nvidia Nview Desktop manager (il faut le bouton "activer" soit visible) :



- Avoir les droits administrateurs

Usages

- Matériel

Activités

- Implantation/Agencement
- BE Sous-traitance
- Carrosserie Industrielle
- Chaudronnerie – Serrurerie
- Mécatronique – Electronique
- Bijouterie – Joaillerie
- Machines spéciales – robotique
- Usinage – Impression 3D
- Applications médicales
- Métiers du bois
- Moule – Injection plastique
- Tôlerie
- Tuyauterie/Process/Usine